

COWES CORINTHIAN YACHT CLUB

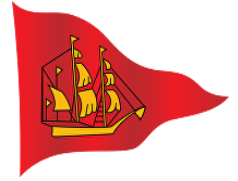
WEEKEND RACE SERIES 2025


22 March to 29 September inclusive 2025

SAILING INSTRUCTIONS

Supplementary to Appendix 'S' of RRS 2025-2028

Dated: 23/3/2025 v.1



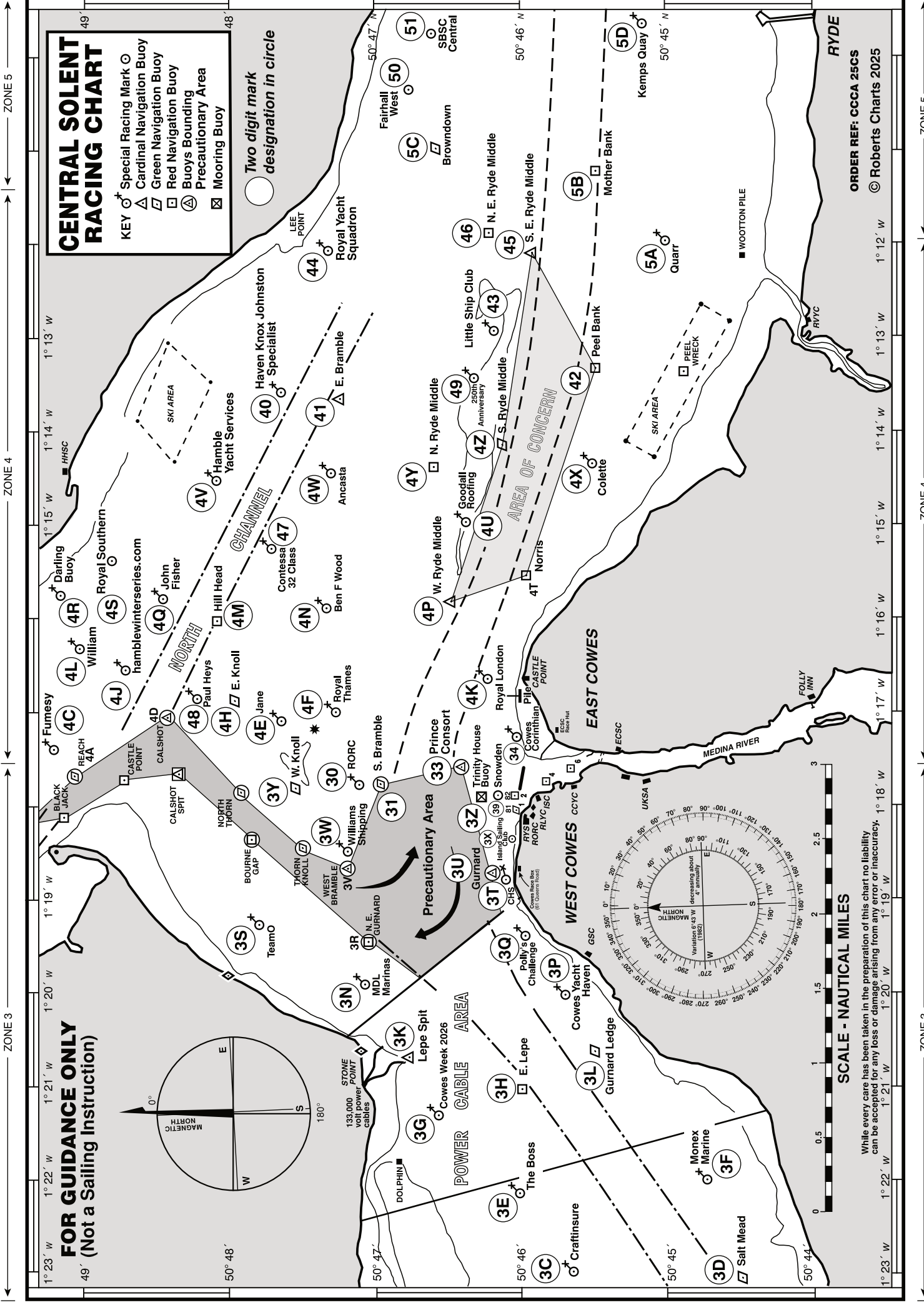
1. Racing is planned on Saturdays and Sundays March to September 2025 on the dates listed in the Schedule below, consisting primarily of Weekend Series Open Regattas, for sailing day boats and Cruisers, available to both CCYC Members and non-Members. There may be more than one race per day. Additional racing consists of the Forts Race and Boxing Day Scramble.
2. The race office and flagpole(for signals made ashore) are at CCYC. Signal flags will be used (RRS 26, 27, 29)by the Race Committee for the starting of races. Class flag shall be flag Romeo . Competitors shall maintain watch for other flag signals/sounds, and for VHF instructions originating from the Committee Vessel.
3. Courses may be set using fixed marks defined by the 2025 SCRA chart and the 2-character identifiers, available on the CCYC and SCRA websites (see 9 below). Movable (inflatable) marks may be used as listed in the SCRA schedule. Start timings, the course,and race related information, will be given over the designated VHF channel, usually before the Warning Signal, as well as updates during the race.
4. It is the Race Committee's intention that the starting and finishing line for the Weekend Series racing, will normally be made between CCYC buoy (34) and the Committee Vessel. All courses are liable to amendment in case of bad weather or otherwise, at the discretion of the Race Officer, in which case competitors will be notified, on the Club noticeboard, and by electronic means. Where second or further races are run on the same day, they may start and/or finish elsewhere to be advised.
5. The time limit for first boat to sail the course and finish is 15:00 BST(Saturdays) and 14:00 BST(Sundays). The time limit for subsequent boats to sail the course and finish: 30 minutes after the first such boat.
6. Additional information, communication and safety requirements are available on Notice of Race 2025.
7. Alterations to Sailing Instructions and Notice of Race may be made by the Race Committee, relating to updated arrangements of individual events, by supplementary Race Orders communicated to participants by electronic means.
8. **Local Byelaws:**
 - 8.1: Boats shall comply with Associated British Ports Notice to Mariners No 3 of 2016 The Moving Prohibited Zone in the Precautionary Area which shall rank as an obstruction for the purposes of RRS 19 and 20. Boats shall avoid close quarters with any commercial vessel.
 - 8.2: Boats shall not anchor or kedge in the Cowes Harbour fairway nor in the area between Stone Point and Gurnard Bay as indicated on the racing chart in these sailing instructions and on Admiralty Chart 2040. Gas and water pipes, telephone and electricity cables carrying 133,000 volts lie on the sea bed. There is a voluntary no-anchoring zone in Osborne Bay.
 - 8.3: Boats shall keep a good look out for ferries and commercial traffic.
 - 8.4: Boats shall pass to the north of the new Cowes Breakwater when racing.
 - 8.5: The Race Committee may set courses that do not permit boats to sail rhumb lines between marks, particularly over the Central Solent Bramble Bank and so not be grounds for redress. This changes RRS 62.

9. Schedule of Races:

SCRA Chart of Racing Marks (Central Solent) attached and at <https://www.scra.org.uk/solent-marks/solent-marks2> First Warning Signals: 11.05 Saturdays, 10.45 Sundays (except Forts Race).

	Saturday Series	Sunday Series	Relevant HW PORTSMOUTH GMT	
22/23 March	Practice Regatta	Practice Regatta	16.29	17.44
29/30 March				
5/6 April	Series#1	Series#1	17.20	18.40
12/13 April				
19/20 April	Spring Open Regatta (A)	Spring Open Regatta (A)	15.15	16.13
26/27 April				
03/04 May	Series#2	Series#2	16.03	17.04
10/11 May				
17/18 May				
24/25 May	May Open Regatta (B)	May Open Regatta (B)	08.34	09.23
31 May/1 June				
7/8 June				
14/15 June				
21/22 June				
28/29 June	Summer Open Regatta (C)	Summer Open Regatta (C)	13.45	14.41
5/6 July				
12/13 July	Series #3	Series #3	12.37	13.14
19/20 July				
26/27 July	July Open Regatta (D)	July Open Regatta (D)	12.32	13.19
2/3 Aug				
9/10 Aug				
16/17 Aug	Series #4	Series #4	16.43	17.47
23/24 Aug				
30/31 Aug	Late Summer Open Regatta (E)	Late Summer Open Regatta (E)	15.35	16.18
6/7 Sept	Forts Race		10.33	
13/14 Sept	Series #5	Series #5	15.18	16.18
20/21 Sept				
27/28 Sept	September Open Regatta (F)	September Open Regatta (F)	14.17	14.53
4/5 Oct				
26 December	Boxing Day Scramble		15.16	

Chart follows:



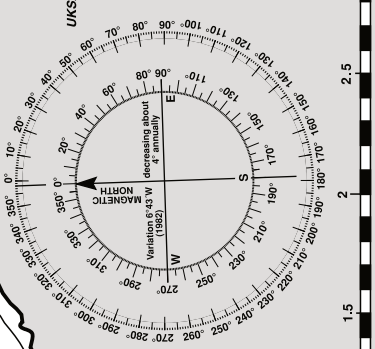
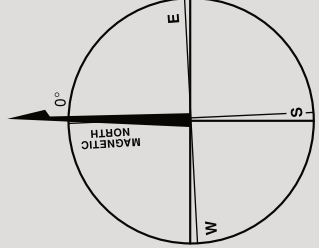
CENTRAL SOLENT RACING CHART

KEY

- ♂ Special Racing Mark
- ⊙ Cardinal Navigation Buoy
- △ Green Navigation Buoy
- ▭ Red Navigation Buoy
- ⊠ Buoy Bounding
- ⊡ Precautionary Area
- ⊞ Mooring Buoy

Two digit mark designation in circle

FOR GUIDANCE ONLY (Not a Sailing Instruction)



SCALE - NAUTICAL MILES

While every care has been taken in the preparation of this chart no liability can be accepted for any loss or damage arising from any error or inaccuracy.

ORDER REF: CCCA 25CS

© Roberts Charts 2025

1° 23' W 1° 22' W 1° 21' W 1° 20' W 1° 19' W 1° 18' W 1° 17' W 1° 16' W 1° 15' W 1° 14' W 1° 13' W 1° 12' W

50° 48' N 50° 47' N 50° 46' N 50° 45' N

ZONE 3 ZONE 4 ZONE 5